



Landmark Pinnacle - 41st Floor, Canary Wharf

£4,250



Prefer to communicate in Chinese? Connect with our China Desk on WeChat at CLH-Hannah. A stunningly rendered two-bedroom apartment in E14, Canary Wharf, featuring incredible views over the Thames.



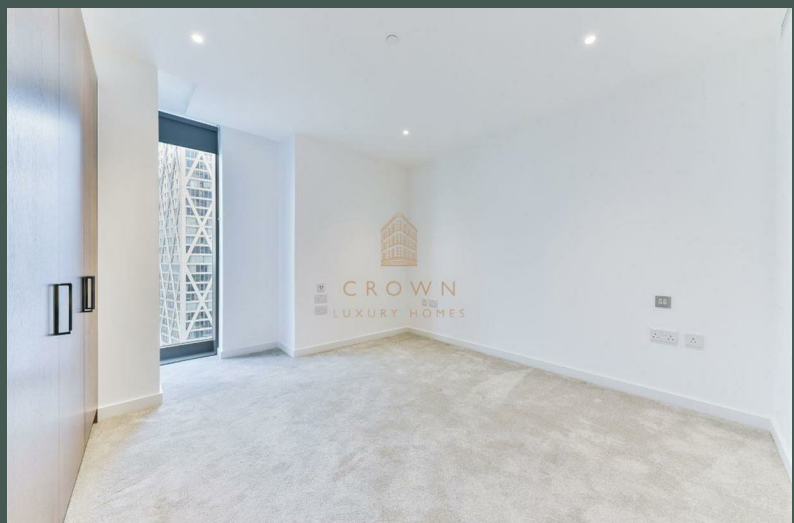
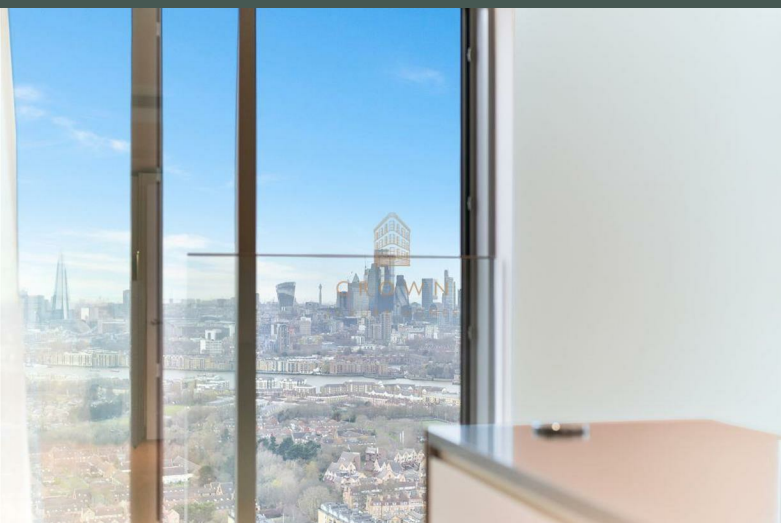
CROWN
LUXURY HOMES

lettings@crownluxuryhomes.com
+44 2035 143482



- 41st Floor
- Residents' Roof Terrace on the 75th Floor
 - Residents' Lounge
 - Residents' Cinema
- Great Transport Links

- 24/7 Concierge
- Residents' Gym
- Residents' Virtual Golf Room
 - River Views
 - Elizabeth Line



The Property

The tallest residential building in Europe, Landmark Pinnacle is extremely well positioned, right at the centre of Canary Wharf, an increasingly beloved district that just goes from strength-to-strength with each passing year. Meanwhile, this spacious two-bedroom property is bright and stylish, with views across the London skyline that are truly breathtaking.

The expansive living and dining area enjoys plenty of natural light, thanks to impressive, floor-to-ceiling windows, whilst the wood floors and excellent fixtures create an effortless sense of sophistication. Here, up on the 41st floor, high above the hustle and bustle of the city, there's plenty of room to socialise or simply enjoy some all-important personal time. Either way, the design and dimensions mean the space has a relaxed, luxurious aesthetic that's wonderfully singular.

A fully-fitted kitchen features modern, top-of-the-range incorporated appliances and an abundance of storage, plus well-crafted work-tops, making this as easy to look at as it is to use. Again, it's the attention to detail that makes this area stand out, utilising modern, cosmopolitan compositions that already feel ahead of their time.

The bedrooms are spacious, carpeted and feature built-in wardrobes, whilst more large windows provide an abundance of light throughout the day. Both of these rooms have access to a good-sized, exquisitely finished bathroom: one an en-suite, the other directly opposite, providing complete privacy. There's also a utility cupboard that houses your washer/dryer, there to make life just that little bit easier.

Landmark Pinnacle Development

The Landmark Pinnacle boasts an array of luxurious amenities designed to elevate residents' lifestyles. With a state-of-the-art fitness centre equipped with the latest equipment, residents can enjoy invigorating workouts with panoramic views of London's skyline. For relaxation and leisure, there is serene rooftop terrace on the 75th floor, perfect for unwinding amidst the hustle and bustle of the city below. The building also features a stylish residents' lounge, ideal for socialising or simply enjoying a quiet moment. Additionally, concierge services ensure convenience and assistance at every turn. Whether indulging in wellness activities, enjoying outdoor spaces, or connecting with neighbours, Landmark Pinnacle offers an unparalleled living experience in the heart of London.

Additional Information

Heating/Hot Water Provider: Murphy Young Utilities

Council: Tower Hamlets, Band F

Holding Deposit: Equivalent to 1 Weeks' Rent

Security Deposit: Equivalent to 5 Weeks' Rent

The landlord is open to proving furniture.

Local Council: Tower Hamlets
Council Tax Band: F

Energy Efficiency Rating		Environmental Impact (CO ₂) Rating			
	Current	Potential		Current	Potential
Very energy efficient - lower running costs			Very environmentally friendly - lower CO ₂ emissions		
(92 plus) A			(92 plus) A		
(81-91) B			(81-91) B		
(69-80) C			(69-80) C		
(55-68) D			(55-68) D		
(39-54) E			(39-54) E		
(21-38) F			(21-38) F		
(1-20) G			(1-20) G		
Not energy efficient - higher running costs			Not environmentally friendly - higher CO ₂ emissions		
England & Wales		EU Directive 2002/91/EC	England & Wales		EU Directive 2002/91/EC

